



B.S. Italia® S.p.a.



via Stezzano 16

24050 ZANICA (BG) ITALY

tel +39-035-671746

fax +39-035-672265

www.bs-italia.it

infobsitalia@styl-comp.it



MEMBER

DICEMBRE 2010 ia/lt newECOTTpresUK.doc 1 di 1

NEW ECO TT

The **ECO TT** thermal break panel, benefits from all the features and advantages of the **ECO** reinforcement (lightness, strength, speed, accuracy). In addition, thanks to its peculiar stratigraphy, it allows a specific characterization of the thermal break, particularly with regard to two very important factors: mechanical strength and thermal resistance.

MECHANICAL STRENGTH

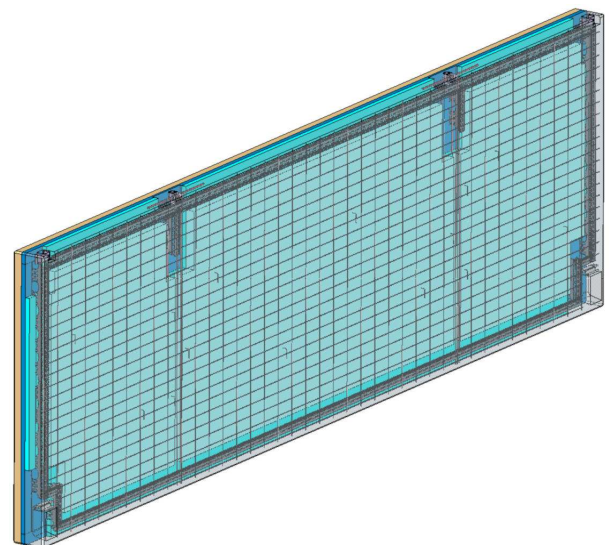
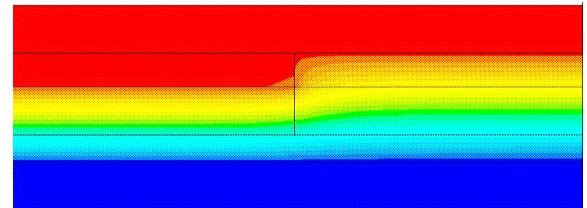
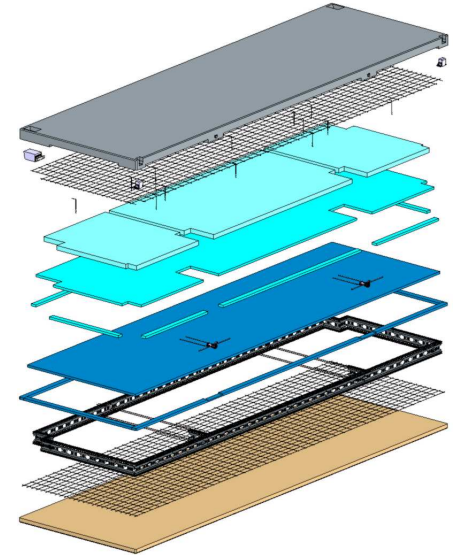
Thanks to the connection obtained with the **ECO** profile, the two concrete layers are working together and so the entire thickness of the panel can be considered for static purposes. This allows to keep the slenderness of the panel (thickness/length) < 50 (recommended value) and to contain its deformations within an acceptable range. This structural conception, compared with the older generation, enables to obtain better mechanical and thermal performances at the same panel's thickness.

THERMAL RESISTANCE

The metal frame made by the **ECO** profile allows to place the insulation by continuity, facilitating the positioning of all the needed metal connections in preset thermal reductions of the isolation. This offers high thermal performance in compliance with the regulations in force. The calculation of the transmittance is performed by finished elements analysis, which allows a correct evaluation of the "thermal bridges" at section changes of the insulating material. The use of the analytical method, unlike the simplified one, enables to work out the transmittance values which better reflect the real behaviour of the panels.

ECO TT is the next-generation solution for thermal break panels: the insulation is without discontinuity, excellent condition to isolate the two layers, even maintaining them strictly cooperative for static purposes along their entire thickness thanks to the **ECO** profile. With appropriate supporting and anchoring systems such as our **HERCULES**, **CONCRETESLOT** and **VICTORY** it's also well suited for seismic areas.

It is admired by designers for its performances and by manufacturers for its easy assembly and cost effectiveness.



B.S. Italia • innovation based on experience

PATENTED AND SEISMIC RESISTENT SUPPORTING, CONNECTION, REINFORCING, LIFTING AND SAFETY SYSTEMS FOR THE PRECAST CONCRETE INDUSTRY