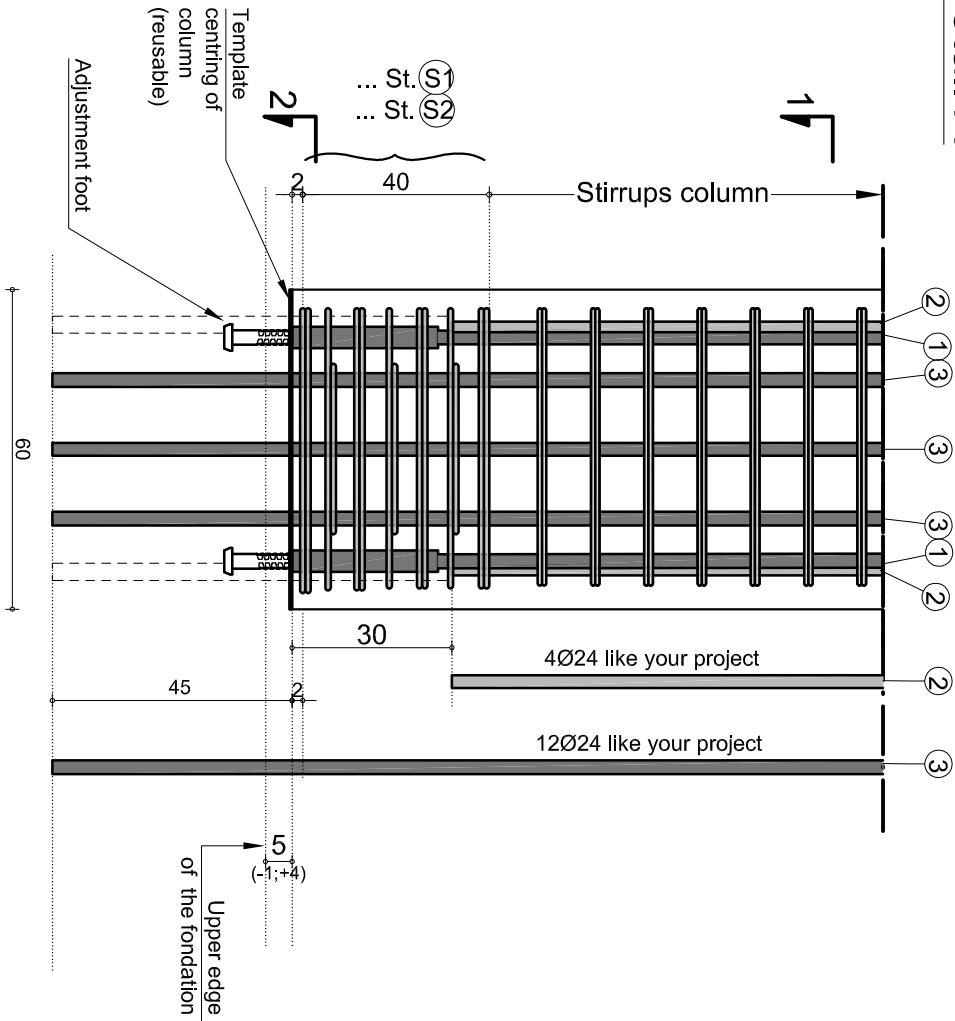
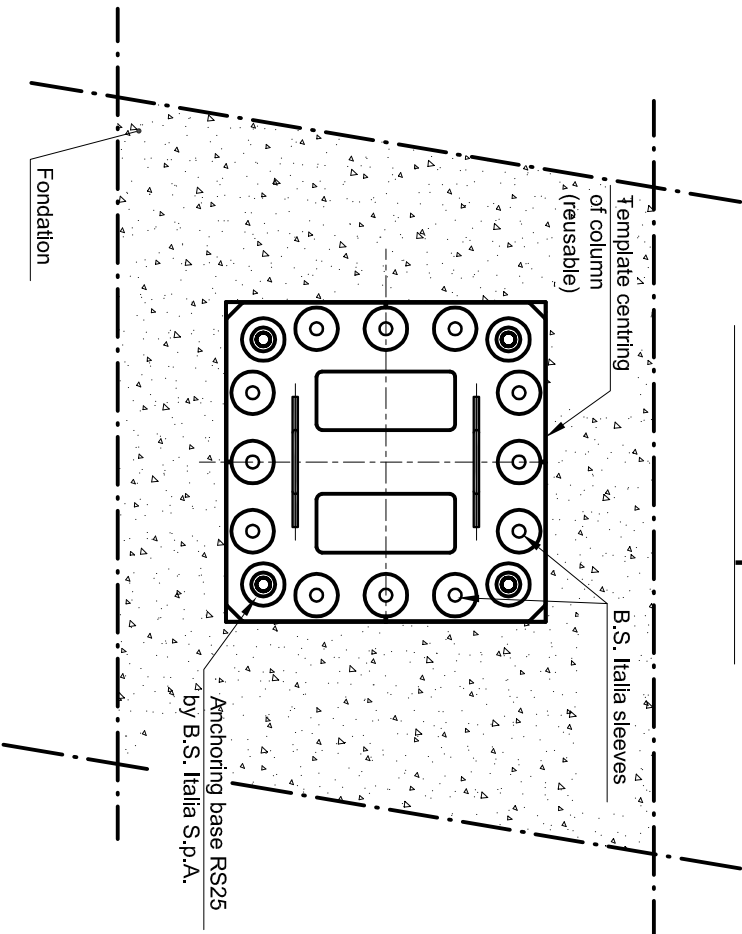


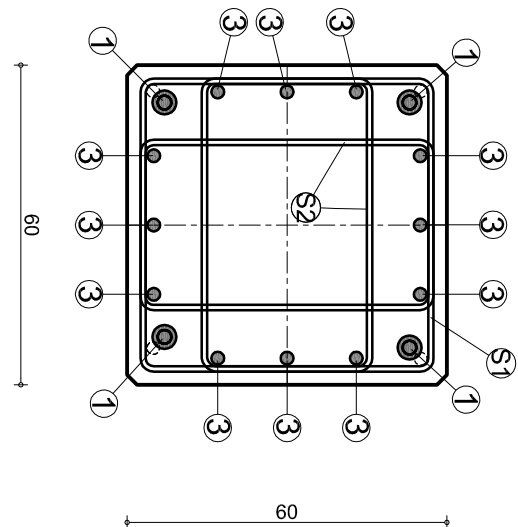
Detail A



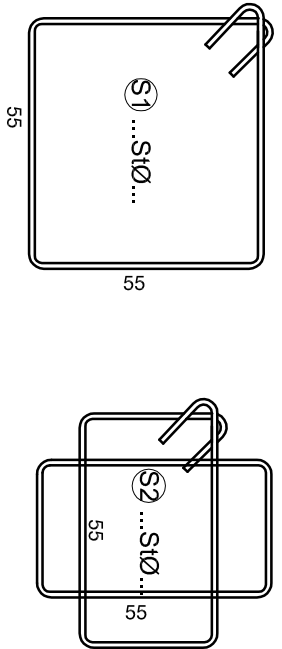
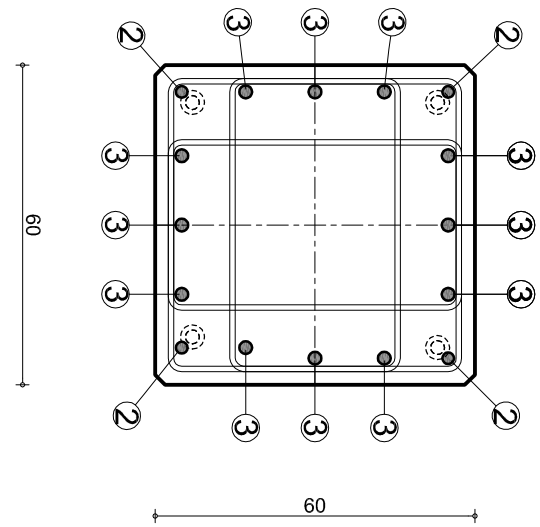
Fondation plant



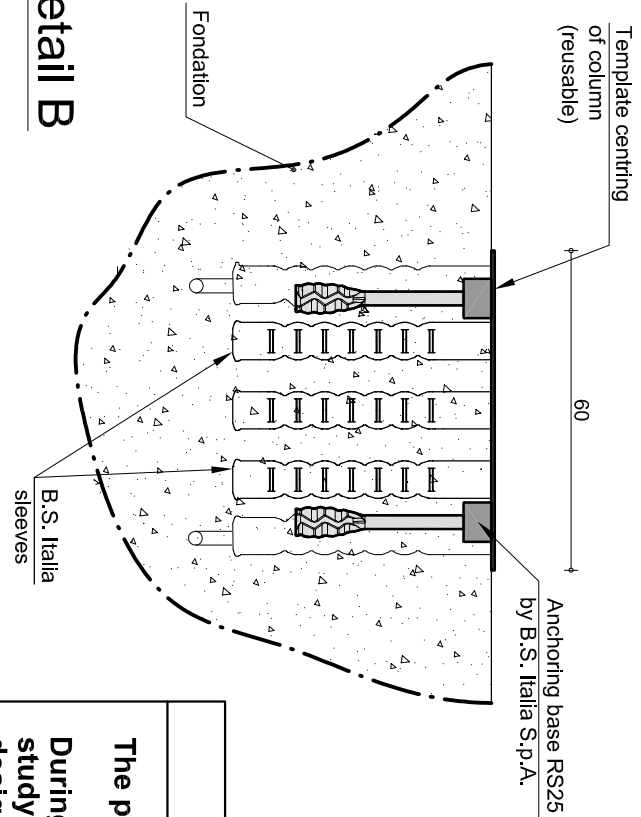
Section "2"



Section "1"



Detail B



IMPORTANT

The present study is only valid as a basis for an offer.  
During the final design details referred to in the present study will be revised in order to make them conform to the design of the reinforcement provided by the customer

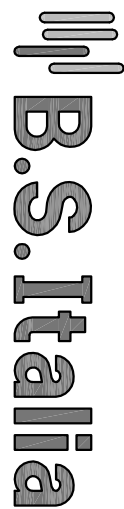
ATTENTION

$$\frac{R_{d,conness.}}{R_{d,plastro}} > 1$$

The sistem of connection in this drawing is classified like type "C".

ATTENTION

- Rebar type ① : n° 4 System RS25 of connection B.S. Italia S.p.a.;
- Rebar type ② : Reinforcement column 4Ø24 (see section 1 and detail A);
- Rebar type ③ : Reinforcement column 12Ø24 go out from column 45 cm (see section 1 and detail A);



Advanced technology for precast concrete  
via Stezzano, 16 Zanica (BG) - Italy  
Tel. +39 035.671.746 - Fax +39 035.672.265

SCALE

-

DATE

Update

Drawing number

Continuity connection  
Detail reinforcement column 60x60 Hmax=16m (Work wind 0.9 kN/mq )

TU/01

The B.S.ITALIA S.p.A. reserves in terms of the law the exclusive property of this design and is forbidden to anyone (unless specifically authorized) to reproduce, use it and transfer it to third parties